

# Slindon CofE Primary School Newsletter



11<sup>th</sup> November 2022

## New half term, new opportunities!

Dear Parents/Carers,

It has been another busy couple of weeks at Slindon CofE Primary School. The children started off the half term learning about the discovery of Tutankhamun's tomb and other facts about Ancient Egypt. We saw pyramid construction in Catkins, Hieroglyphics in Hazel, mummification in Acorns and death mask sketching in Chestnuts. The children had a fantastic time learning about this fascinating period, and some examples of work can be seen below. The examples of art work below show how art progresses across the school, as we encourage the children to develop their use of different media and techniques.

Acorn class have also had their trip to Pizza Express, learning about fresh ingredients, how pizza is made and linking this to their work on the digestive system. They had a fantastic time making the pizza and were exceptionally well mannered throughout.

We have been lucky enough to have assemblies from SPLASH, Rvd Dyson and our Remembrance assembly over the last couple of weeks. All of which linked to our new theme of 'Thankfulness' linked to our Christian vision of 'Goodness.' The children have been talking about what they are thankful for and we have had some interesting responses.

As we approach Christmas we have lots of fun activities, sporting events and PFA activities, so please keep your eyes peeled for the letters and diary dates.

Laura Webb  
Headteacher

***To begin this half term we are focusing on Thankfulness. We will be discussing things in their life they should be thankful for.***

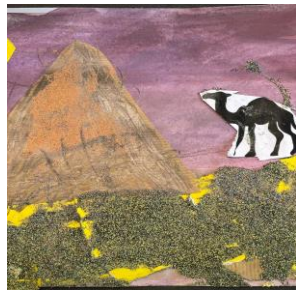
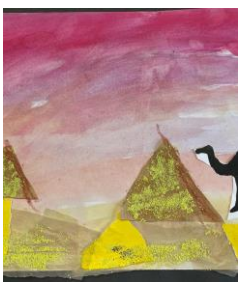
***Galatians 5:22-24 But the fruit of the Spirit is love, joy, peace, patience, kindness, goodness, faithfulness, gentleness, self-control; against such things there is no law.***

## Dates

14/11	World Diabetes Day
14/11	Biodiversity day
15/11	Parents evening 1
16/11	Parents evening 2
17/11	Children in Need day.
2/12	Christmas Fayre
5/12	Indoor Cricket Tournament for Year 5/6
6/12	Christmas Pop-up shop
6/12	Messy Church – Christmas Cakes
8/12	Christmas Jumper Day
11/12	Christingle Service at St Mary's Church
13/12	Christmas party afternoon
14/12	Carol Service at St Mary's Church
15/12	Christmas Nativity performance
15/12	Christmas Movie Night
23/01	Weald and Downland trip for Reception to Year 4.
20/02	INSET day 4
05/06	INSET day 5

# What's happening in school?

## Catkins Class



As part of our Tutankhamun week, Catkins Class have been exploring where Egypt is. They have then been looking at the amazing artefacts that were found in Tutankhamun's tomb and spent some time digging in sand to find some.

As part of this week, they also created some phenomenal, mixed media artwork based on the Pyramids of Giza. You can see how much effort they put into using watercolour for the background and then using shading and sand to make the pyramids stand out.

## Hazel Class

In Hazel Class, they have been focusing on some Egyptian Hieroglyphic (writing their own names and a big cardboard art piece spelling 'Hazel Class'). They found out about 'The Rosetta Stone' and discovered how this was used to decipher the hieroglyphics. They then used the cardboard and colour to represent the Rosetta Stone in their artwork.



**Maths fact – Did you know that fractions, decimals and percentages are linked?**

**Here are some we need to know:**

$$\frac{1}{2} = 0.5 = 50\%$$

$$\frac{1}{4} = 0.25 = 25\%$$

$$\frac{3}{4} = 0.75 = 75\%$$

$$\frac{1}{3} = 0.33' = 33\%$$

**SPAG fact- A subordinate clause (or dependent clause) is a clause that cannot stand alone as a complete sentence because it does not express a complete thought.**

**Like all clauses, a subordinate clause has a subject and verb.**

**Personally I'm always ready to learn, although I do not always like being taught. (Sir Winston Churchill, 1874-1965)**

## Acorn Class.

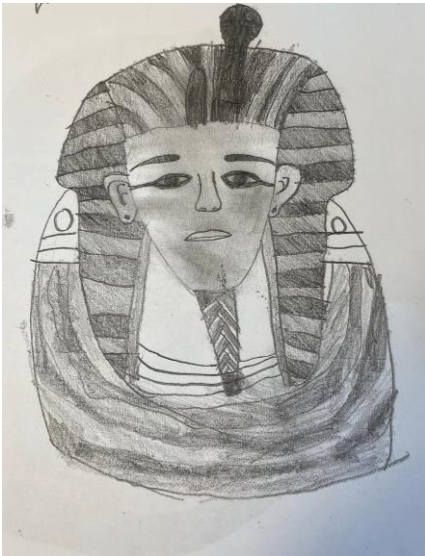
As part of Tutankhamun week Acorn Class researched the crowns of upper and lower Egypt. They discovered that there were many different designs, depending on the Pharaoh and their power.

Inspired by this they created their own profiles, with a crown designed by them. They then used oil pastels to create these bright and colourful pieces of art.



## Chestnut Class

Chestnut Class took on the very difficult challenge of recreating Tutankhamun's death mask. Mrs Tully challenged them to use depth and texture, to make the image pop from the paper. They then focused on water colour to pick out some of the vibrant colours. We think they did a wonderful job!



## Standard School Year 2022/2023

Recommended school term and holiday dates for the academic year 2022/2023 for West Sussex  
The School Year

	2022				2023													
	September				October				November				December					
Monday	5	12	19	26	3	10	17	24	31	7	14	21	28	5	12	19	26	
Tuesday	6	13	20	27	4	11	18	25		1	8	15	22	29	6	13	20	27
Wednesday	7	14	21	28	5	12	19	26		2	9	16	23	30	7	14	21	28
Thursday	1	8	15	22	6	13	20	27		3	10	17	24	1	8	15	22	29
Friday	2	9	16	23	7	14	21	28		4	11	18	25	2	9	16	23	30
Saturday	3	10	17	24	1	8	15	22	29	5	12	19	26	3	10	17	24	31
Sunday	4	11	18	25	2	9	16	23	30	6	13	20	27	4	11	18	25	

	2023																	
	January				February				March				April					
Monday	2	9	16	23	30	6	13	20	27	6	13	20	27	3	10	17	24	
Tuesday	3	10	17	24	31	7	14	21	28	7	14	21	28	4	11	18	25	
Wednesday	4	11	18	25		1	8	15	22	1	8	15	22	5	12	19	26	
Thursday	5	12	19	26		2	9	16	23	2	9	16	23	6	13	20	27	
Friday	6	13	20	27		3	10	17	24	3	10	17	24	7	14	21	28	
Saturday	7	14	21	28		4	11	18	25	4	11	18	25	1	8	15	22	29
Sunday	1	8	15	22	29	5	12	19	26	5	12	19	26	2	9	16	23	30

	May				June				July				August						
Monday	1	8	15	22	29	5	12	19	26	3	10	17	24	31	7	14	21	28	
Tuesday	2	9	16	23	30	6	13	20	27	4	11	18	25		1	8	15	22	29
Wednesday	3	10	17	24	31	7	14	21	28	5	12	19	26		2	9	16	23	30
Thursday	4	11	18	25		1	8	15	22	6	13	20	27		3	10	17	24	31
Friday	5	12	19	26		2	9	16	23	7	14	21	28		4	11	18	25	
Saturday	6	13	20	27		3	10	17	24	1	8	15	22	29	5	12	19	26	
Sunday	7	14	21	28		4	11	18	25	2	9	16	23	30	6	13	20	27	

### Bank and Public Holidays 2022/2023

Christmas Holiday	27th December 2022 (in lieu of 25th)	May Day	1st May 2023
Boxing Day	26th December 2022	Spring Bank Holiday	29th May 2023
New Year Day Holiday	2nd January 2023 (in lieu of 1st)	Summer Bank Holiday	28th August 2023
Good Friday	7th April 2023		
Easter Monday	10th April 2023		

### Useful Information

	Term Lengths (days)		
School holidays	September to October half term	37	
	October to December	35	
Bank holidays and national holidays	January to February half term	29	
	February to April	30	
Start of Term	April to May half term	29	
	June to July	35	
End of Term	<b>Total</b>	<b>195 days</b>	

Please note that the first day of the autumn term in September 2023 will not be determined until the 2023/24 timetable has been consulted upon and approved.





the national sleep helpline

# Does your child suffer with sleep issues?

Do you struggle with your child's bedtime?  
Will your child not sleep in their own bed?

WE CAN HELP

**03303 530 541**  
Sunday - Tuesday & Thursday 7pm - 9pm  
Wednesday 9am - 11am

the national sleep helpline

**50%**

**Around 50% of children will have a sleep issue at some point\***

**WHAT IS THE NATIONAL SLEEP HELPLINE?**  
In partnership with Furniture Village, The Sleep Charity has launched a brand new National Sleep Helpline to ensure that everyone has access to high quality, evidence-based advice.

**HOW CAN THE NATIONAL SLEEP HELPLINE HELP YOU?**

- Run by a team of specialist trained sleep advisors
- Offer you some practical strategies and recommend services that could help
- Ensuring you understand how sleep plays an important part in your child's mental health and wellbeing
- Listen without judgement and help you decide what next steps are right for you
- Empower you with sleep knowledge so you can understand why your child might not be sleeping well and how that can change

**03303 530 541**  
Sunday - Tuesday & Thursday 7pm - 9pm  
Wednesday 9am - 11am

POWERED BY  IN PARTNERSHIP WITH 

Copyright © 2022 The Sleep Charity. All rights reserved. The Sleep Charity, a charitable incorporated organisation registered with the Charity Commission under registration number 1150685.  
\*Survey of 2,000 adults by OnePoll, Aug 2021