

# Science Knowledge Organiser: What's growing in our gardens?

## Key Vocabulary

<b>Plant</b>	A living thing that grows in the Earth and has a stem, leaves, and roots.
<b>Tree</b>	A tall plant that has parts including a trunk, branches, and leaves.
<b>Roots</b>	The part of the plant that grows underground.
<b>Trunk</b>	The large main stem from which the branches grow.
<b>Branches</b>	Parts that grow from the tree trunk and have leaves, flowers or fruit growing from them.
<b>Leaves/leaf</b>	The parts of the tree that are usually green and can be found in different shapes depending on the tree.
<b>Evergreen</b>	A tree or bush that has green leaves all year round.
<b>Deciduous</b>	A tree that loses its leaves in the autumn each year.
<b>Fruit</b>	A food that grows on a tree or bush and contains seeds or a stone.
<b>Vegetable</b>	A food that grows in the ground such as a potato, does not have seeds.
<b>Vegetation</b>	Plants, trees, and flowers.
<b>Garden</b>	A piece of land next to a house, with flowers, vegetables, and grass.
<b>Herb</b>	The leaves of the plant are used in cooking to add flavour to food.
<b>Flower</b>	The part of the plant which is brightly coloured and grows at the end of the stem.
<b>Flowering</b>	Trees or plants that produce flowers.
<b>Bulb</b>	A root shaped like an onion that grows into a flower or plant.
<b>Seed</b>	The small part from which a new plant grows.
<b>Stem</b>	The thin, upright part of a plant on which flowers and leaves grow.
<b>Petal</b>	Thin, coloured, or white parts which form part of the flower.
<b>Weed</b>	A wild plant that grows in places such as the garden and prevents that plants that you want from growing properly.
<b>Wild</b>	Animals or plants that live or grow in natural surroundings and are not looked after by people.
<b>Common</b>	Something that is found in large numbers.

### Science Skills

- Sorting and Classifying
- Observation
- Research
- Pattern Seeking



## Knowledge Outcomes:

- I can identify and name a variety of common wild and garden plants, including deciduous and evergreen trees.
- I can identify and describe the basic structure of a variety of common flowering plants, including trees.
- I can share knowledge about gardens and gardeners.
- I can consider what seeds need to be able to grow and how you can keep seeds healthy.

## Working Scientifically.

- I can ask simple questions and recognise that these can be answered in different ways.
- I can identify and classify.

## EYFS LINKS

### Communication and Language: Listening, Attention and Understanding

Learn new vocabulary

Use new vocabulary through the day

Ask questions to find out more and to check they understand what has been said to them.

Articulate their ideas and thoughts in well-formed sentences.

Connect one idea or action to another using a range of connectives.

Describe events in some detail

Use talk to help work out problems and organise thinking and activities explain why they might happen.

### Understanding the World:: The Natural World

Explore the natural world around them, making observations.

Know some similarities and differences between the natural world around them and contrasting environments, drawing on their experiences and what has been read in class.

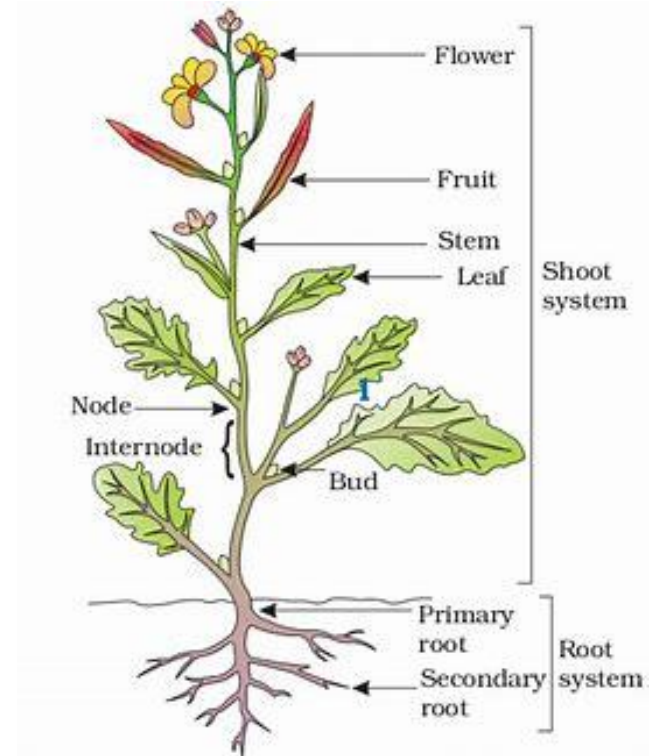
Understand some important processes and changes in the natural world around them, including the seasons.

# Science Knowledge Organiser: What's growing in our gardens?

To examine plants for signs of them having been eaten. Consider what may have eaten the plants and what else might be living in that place.



To look carefully at pollen and understand more about the role it plays in the growing of plants.



Evergreen



Deciduous

